

ROBERTS PROJECTS

FOR IMMEDIATE RELEASE
May 23, 2022

Frequency Illusion

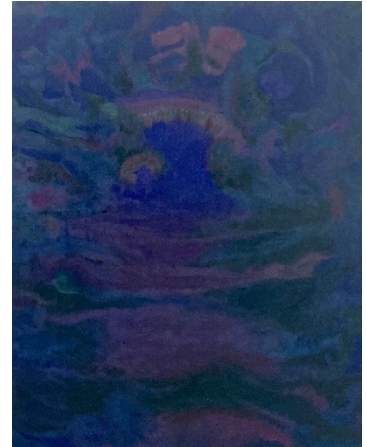
Gwen Hollingsworth and Christine Turner

June 11 – July 30, 2022

Opening Reception Saturday, June 11th, 5-7pm

In *Frequency Illusion*, the unification of form and color within each artist's practice reflects a surrounding world of inspiration. Gwen Hollingsworth's attention to the only specific tonalities of blue suggests a profound preoccupation with unearthing the interior self from that of the exterior world. In the darkest shades, nearly inky black she sculpts shape from shadow.

Derived from a series of metaphysical paintings, they chart the passage of time, feminine intuition, and the artist's own personal experiences, respectively. Conversely, Christine Turner's colorful dotted paintings emphasize compositional structure. The expressive potential of the highly pigmented greens and yellows, in contrast with accents of bright reds, accumulates each glance. Rhythmical and energetic, almost chaotic, they encourage regenerative acts without sentimentality.



Gwen Hollingsworth: *Fateful Path*
2022, oil on canvas, 48 x 36 x 1.5
in (121.9 x 91.4 x 3.8 cm)

About the Artists

Christine Turner (b.1990, Champaign-Urbana, Illinois; lives in Los Angeles, CA) recently graduated with her MFA from the School of the Art Institute of Chicago, in 2020, earning the Carrie Ellen Tuttle Fellowship in Painting. Employing a multitude of motifs that speak to visibility, Turner's paintings explore literal and metaphorical blind spots through the language of perceptual and formal abstraction. Rooted in her own embodied experience of abstracted vision, Turner's paintings function as fields for visual vertigo.

Gwen Hollingsworth (b.1998, Los Angeles, CA; lives in Los Angeles, CA) uses drawing and painting to highlight the psychology of space and its impact on our realities to create new visual and spiritual paradigms. Her practice explores phenomena in the natural world as a way of seeking sanctuary and self-knowing. She received her B.A. from The University of California, Los Angeles in 2020.

For press inquiries, please contact Hannah Gottlieb-Graham, ALMA Communications,
hannah@almacommunications.co

For additional information regarding the artists on view, please visit robertsprojectsla.com or contact Camille Weiner, Director, camille@robertsprojectsla.com