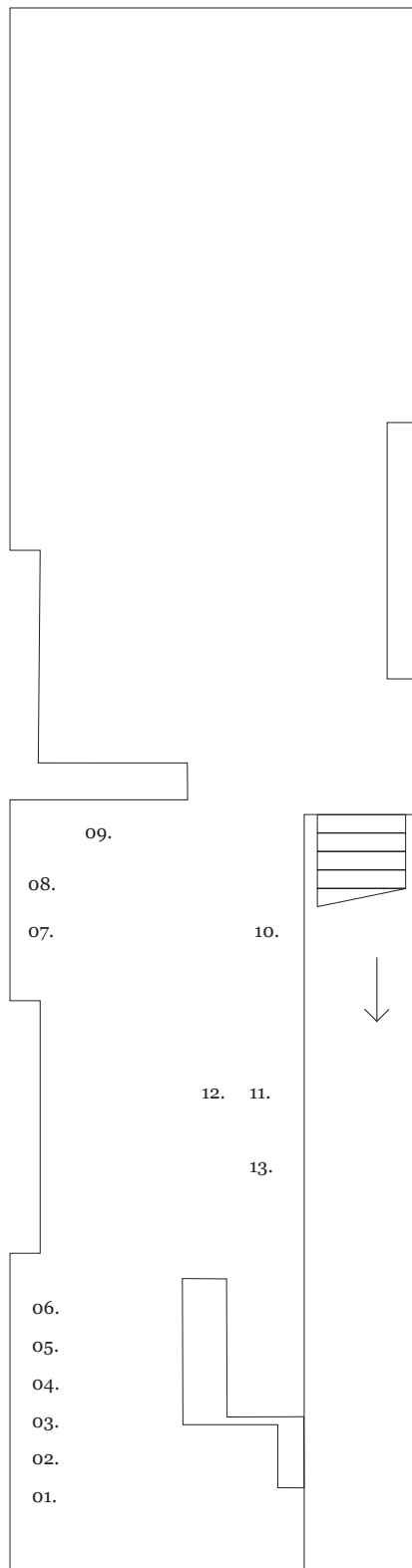


The Same For Everyone

Week 1: Tim Head & Melanie Smith

—
22 – 25 July 2020



Taking a cue from Nathan Coley's seminal text work, currently on display in London as part of 'Sculpture in the City', Parafin's summer programme creates a series of shifting dialogues and encounters between works by the artists the gallery represents. Coley's work highlights the ambiguity of language, and can be read as a statement of fact, an exhortation, a critique or even a lament, and this series of staged encounters will be similarly open. Multiple potential meanings are produced by changing contexts. Every week a different group of works will be placed 'in focus' in the front part of the gallery's main space, while the rest of the gallery will be given over to an ongoing group hang.

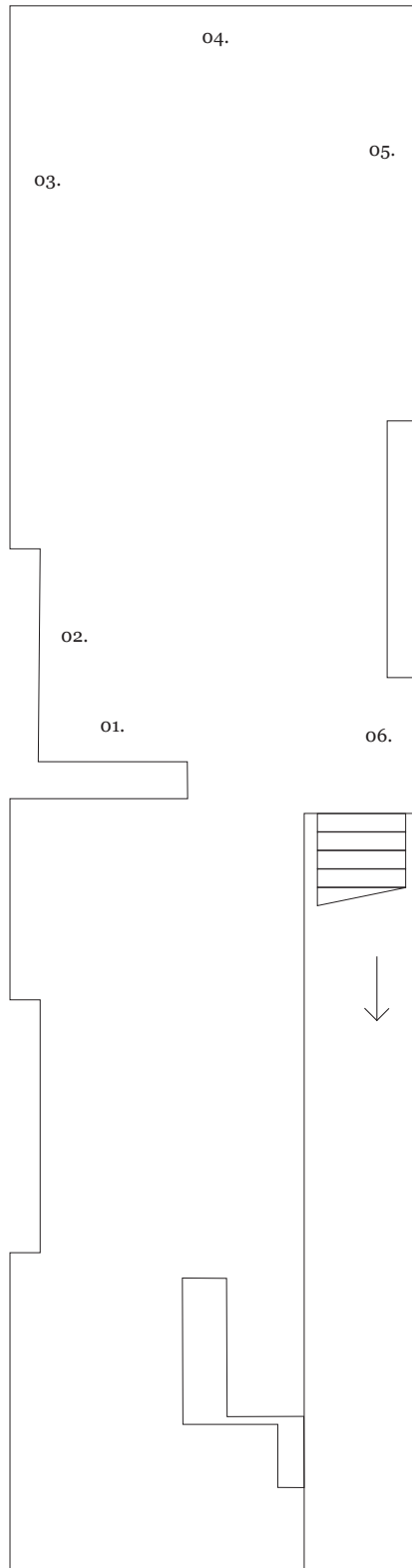
—
The first encounter is between a group of Melanie Smith's 'diagram paintings' and Tim Head's seminal 1980s painting, *Frozen Planet* (1988). In these works Head and Smith explore the role of information in shaping (and perhaps distorting) our world views. Smith's paintings present anonymous diagrams shorn of all data referents and Head's work utilises satellite imaging of the oceans. Lacking any context, the images become abstracted yet also ominous.

List of Works

-
- 01-08. Melanie Smith, *Diagram Paintings*, 2019
Oil, acrylic, enamel and encaustic on MDF, Dimensions variable
Please ask for full work details
-
09. Nathan Coley, *The Same For Everyone*, 2017
Aluminium lightbox with LED lamps, 105 × 75 × 8 cm
-
10. Tim Head, *Frozen Planet*, 1988
Acrylic on canvas, 152.4 × 121.9 cm
-
- 11-13. Tim Head, *Studies for 'Dark Planet'*, 1987
Ink on paper, Dimensions variable
Please ask for full work details

Gallery Artists

—
22 – 25 July 2020



List of Works

Ground Floor

-
01. Justin Mortimer, *Kult II*, 2014
Oil on panel, 43 × 25 cm
-
02. Justin Mortimer, *Djinn II*, 2015
Oil on canvas, 40.5 × 30 cm
-
03. Uwe Wittwer, *Cover*, 2018
Oil on canvas, 150 × 135 cm
-
04. Tim Head, *Flesh and Blood*, 1987
Acrylic on canvas, 213.4 × 152.4 cm
-
05. Fred Sorrell, *Dapple iii*, 2020
Acrylic on linen, 120 × 150 cm
-
06. Justin Mortimer, *Hoax 10*, 2017
Oil and acrylic on canvas, 46 × 35.5 cm

Lower Floor (clockwise from base of stairs)

-
01. Nancy Holt, *Untitled (Waning Sphere)*, 1973
Pencil on paper, 22.9 × 30.5 cm
-
- 02-04. Hiraki Sawa, *iota drawings*, 2016
White ink on unique inkjet prints, 4.5 × 3.5 cm each
-
05. Tim Head, *Living Dead I*, 1987
Acrylic on canvas, 121.9 × 121.9 cm
-
06. Hamish Fulton, *Touching Boulders By Hand, Cairngorms, Scotland*, 2013, 2013
Framed archival inkjet print, 57 × 70 cm
-
07. Hamish Fulton, *Milestones, Wales & England*, 2010, 2010
Framed archival inkjet print, 58 × 45 cm
-
08. Hugo Wilson, *Untitled (Pan Troglodytes)*, 2008
Pencil on tracing paper, 62.5 × 94 cm
-
- 09-12. Melanie Smith, *Collages for 'Vortex'*, 2019
Collage on paper, 29 × 25.1 cm each
-
13. Fred Sorrell, *Double Back*, 2019
Gouache on paper, 50 × 65 cm