

Follow
Keith the bee
to buzz round
this way

FRIEZE SCULPTURE Family Trail

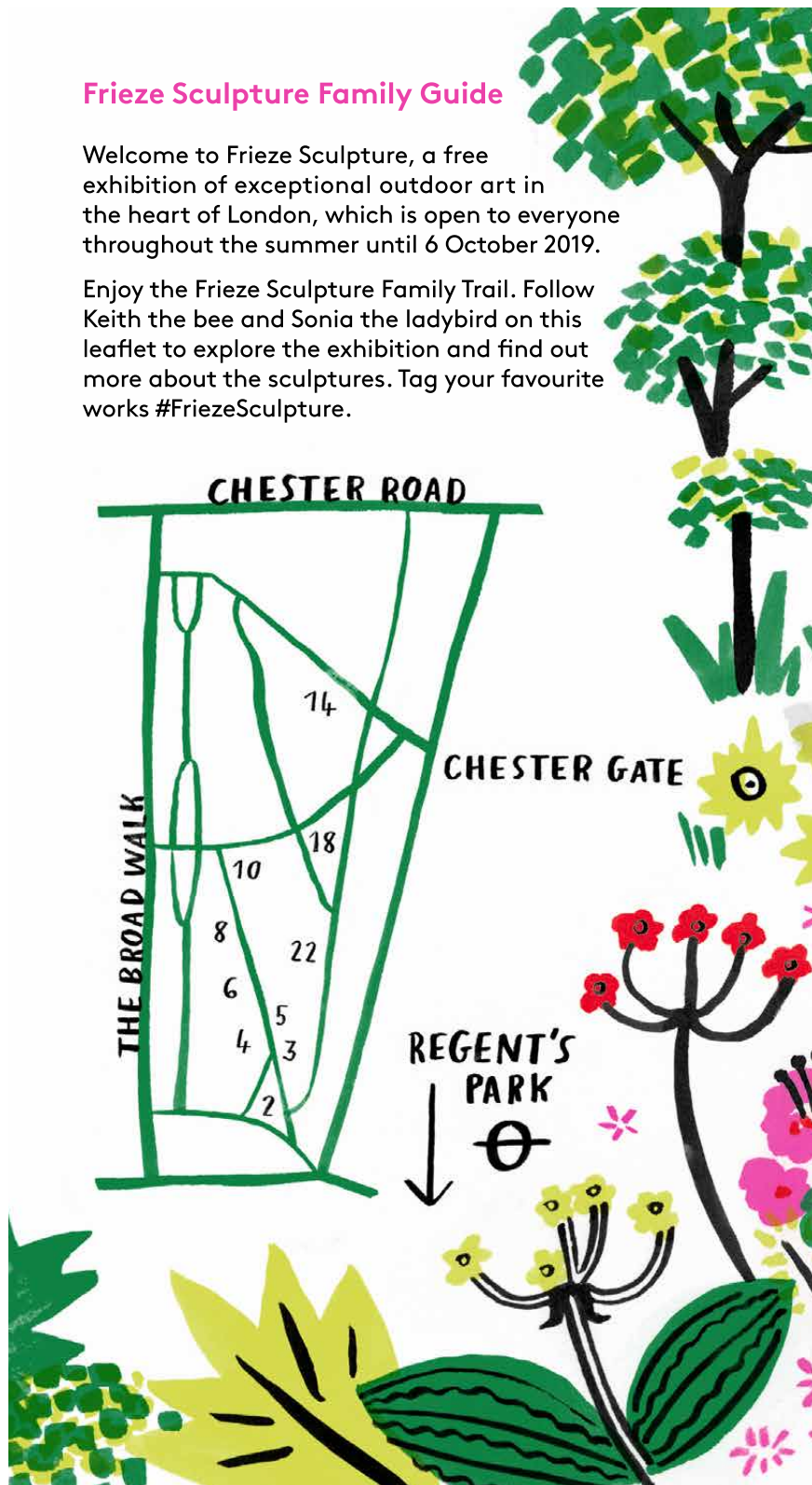
Illustrated by
NINA CHAKRABARTI

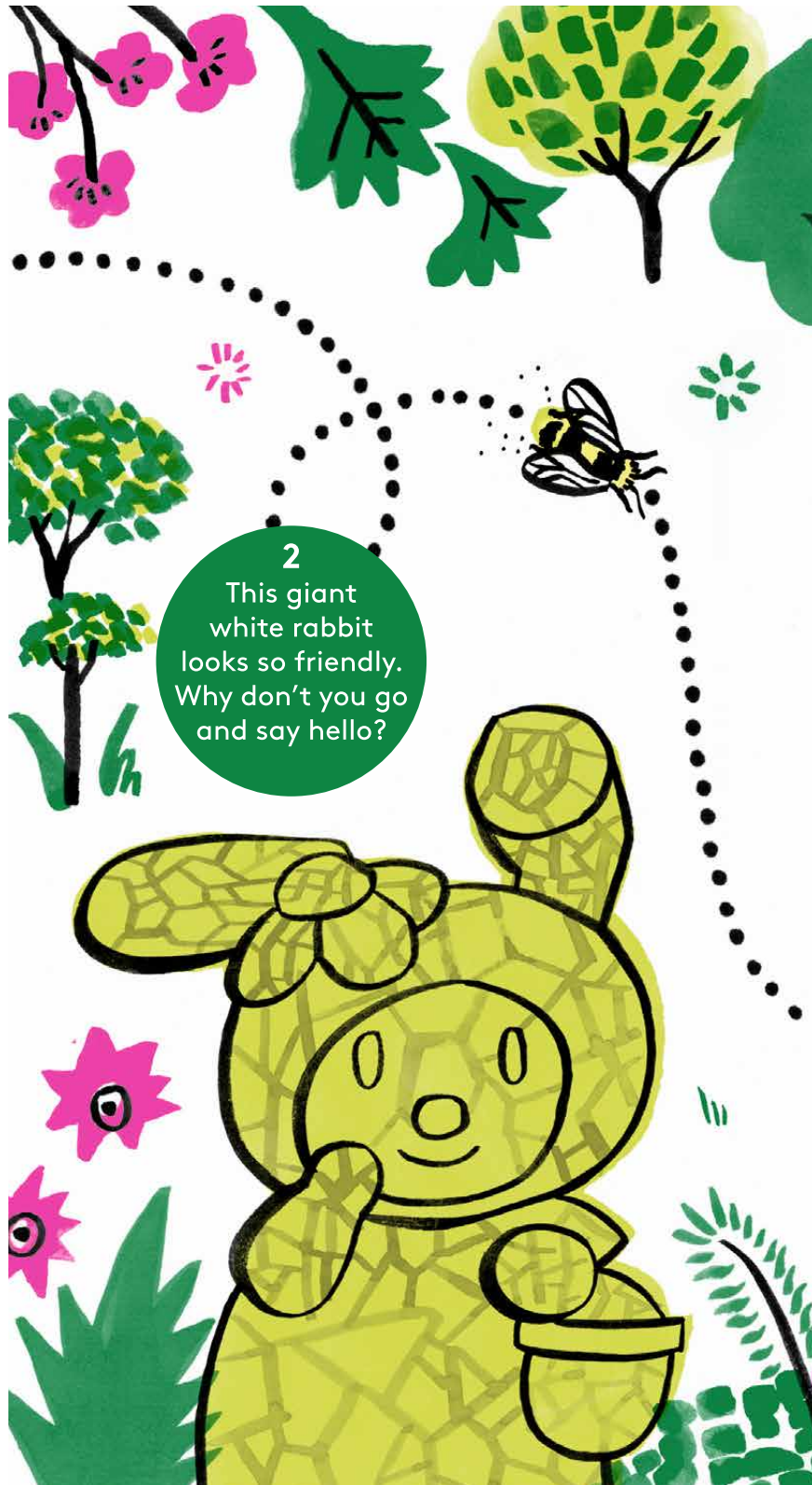
Follow Sonia
the ladybird
to fly round
that way

Frieze Sculpture Family Guide

Welcome to Frieze Sculpture, a free exhibition of exceptional outdoor art in the heart of London, which is open to everyone throughout the summer until 6 October 2019.

Enjoy the Frieze Sculpture Family Trail. Follow Keith the bee and Sonia the ladybird on this leaflet to explore the exhibition and find out more about the sculptures. Tag your favourite works #FriezeSculpture.





2

This giant
white rabbit
looks so friendly.
Why don't you go
and say hello?



3

Vroom vroom!
Where would you
like to go today?
Let's go on an
adventure.



4

A cog is normally a small part of a larger machine. Why do you think the artist has made this one so big?



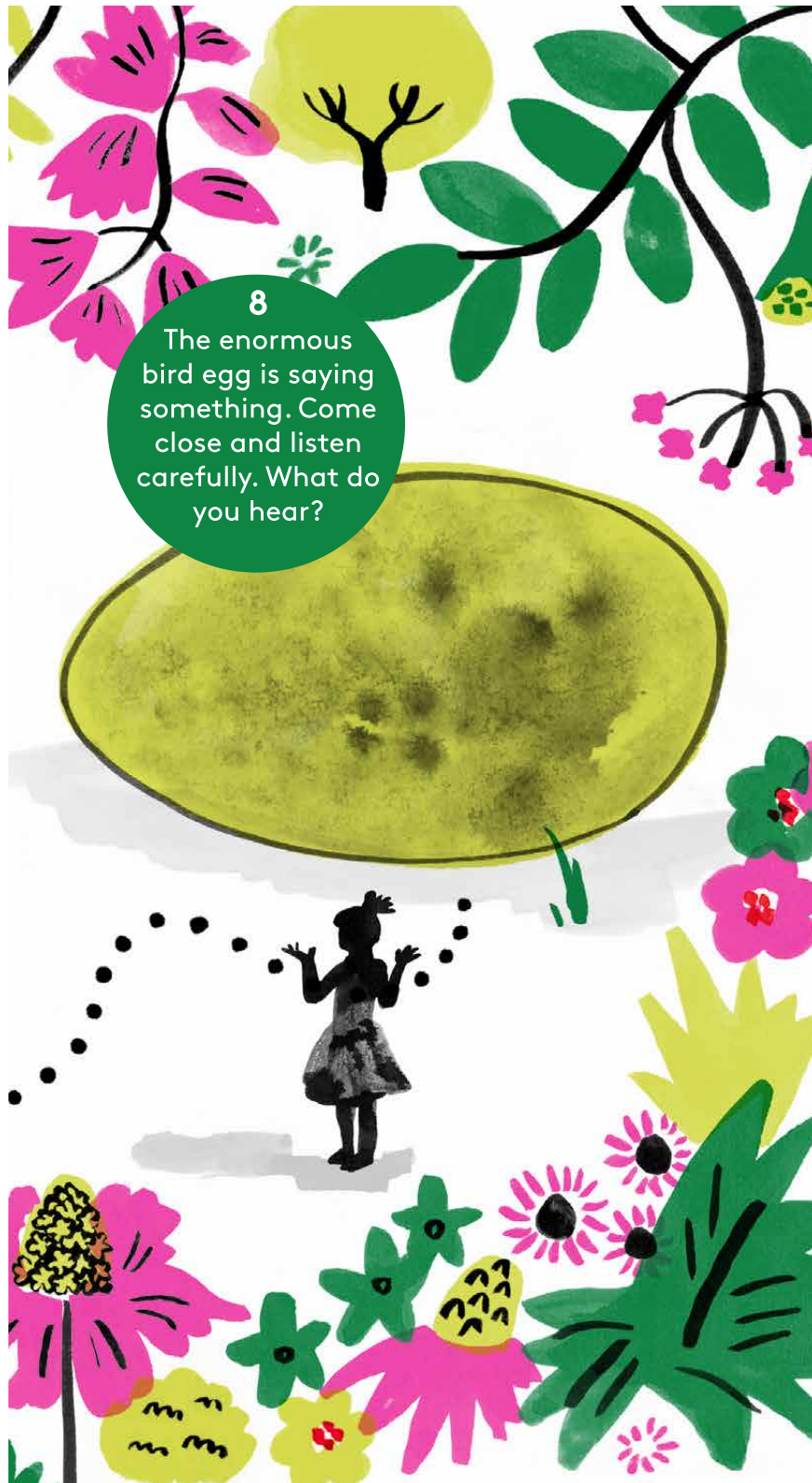
5

This sculpture has rabbit ears and a human face. Take a look inside.



Can you find a squirrel and a hedgehog somewhere on this guide?

6
Bees are known to swarm around objects enveloping them completely. What object are the bees swarming and covering here?



8

The enormous
bird egg is saying
something. Come
close and listen
carefully. What do
you hear?

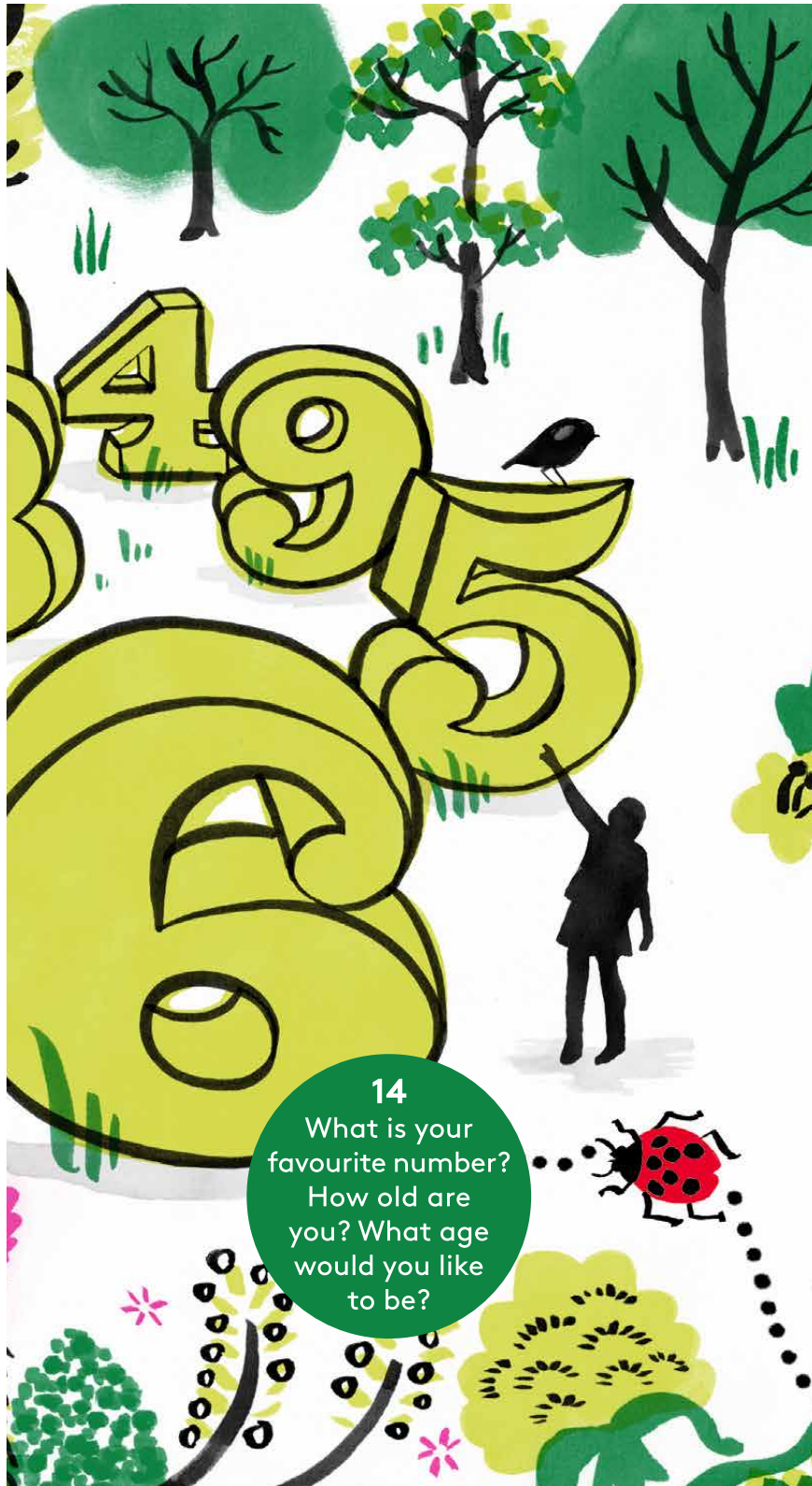


10

This sculpture was made from used cars – and looks like it could come alive at any second. What would it say to you if it did?

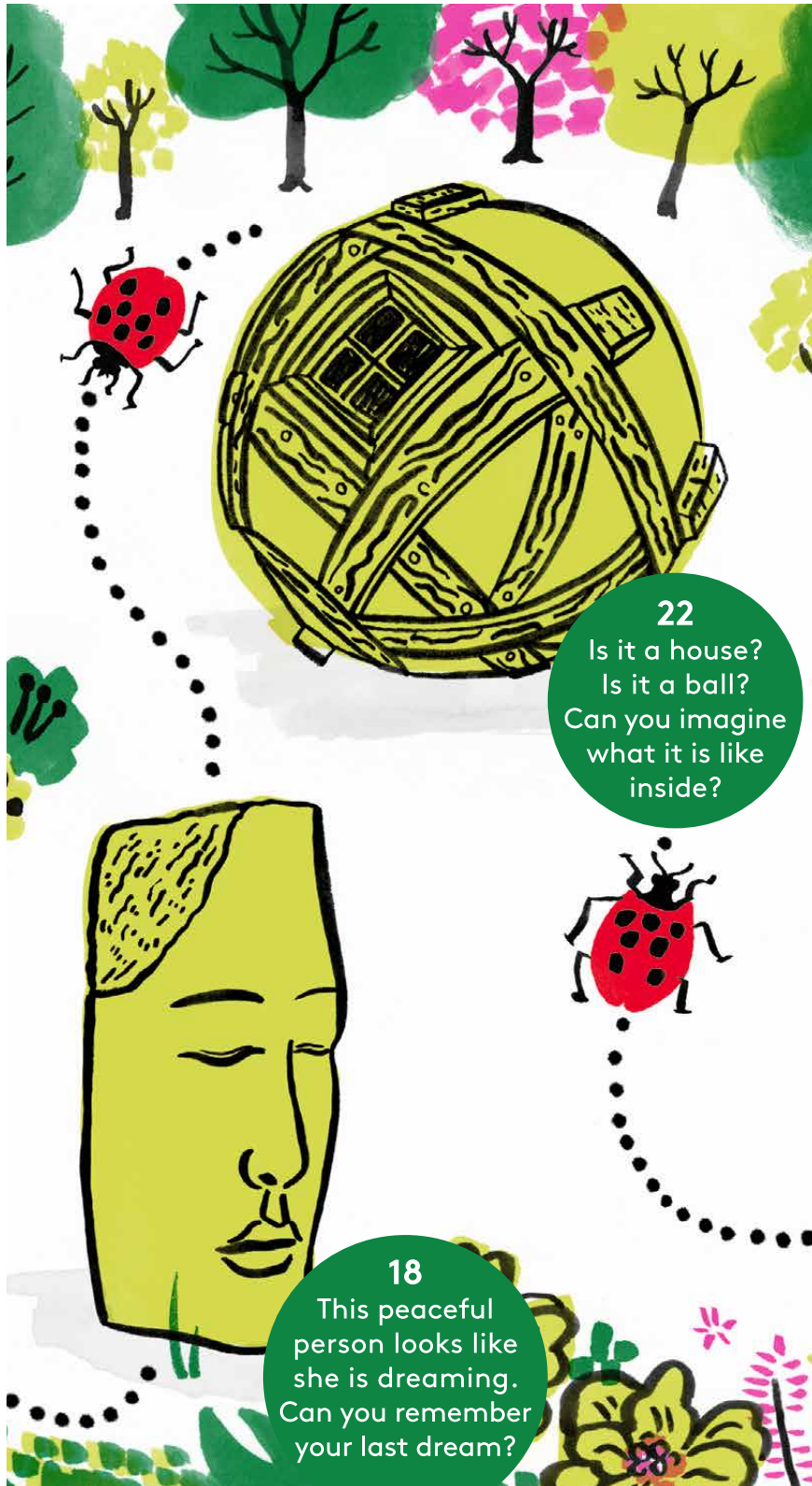


There are
three birds
on this guide.
Can you find
them?



14

What is your
favourite number?
How old are
you? What age
would you like
to be?



22

Is it a house?
Is it a ball?
Can you imagine
what it is like
inside?

18

This peaceful
person looks like
she is dreaming.
Can you remember
your last dream?